

SANUWAVE

Healing today. Curing tomorrow.

OTC/BB Ticker SNWV
Recent Stock Price (10/04/11) \$2.00
52-Week Range \$1.60 - \$5.72
Market Capitalization \$41.8 Mil.
Shares Outstanding 20.9 Mil.
Fiscal Year-End Dec. 31

SANUWAVE Health, Inc. is a regenerative medicine company that develops and commercializes non-invasive, **biological response activating devices** to repair and regenerate tissue, musculoskeletal and vascular structures. Its products activate biologic signaling and angiogenic responses, including new vascularization and microcirculatory improvement, which help to **restore the body's normal healing processes and regeneration**. SANUWAVE is applying its proprietary **Pulsed Acoustic Cellular Expression (PACE®) technology** in wound healing, orthopedic/spine, plastic/cosmetic and cardiac applications. Its lead product, dermaPACE®, has CE mark approval to treat skin and subcutaneous soft tissue, and has **completed a pivotal Phase III, Investigational Device Exemption (IDE) clinical trial in the U.S.** for the treatment of diabetic foot ulcers (DFU) with highly positive and clinically meaningful results.

INVESTMENT HIGHLIGHTS

Proven PACE® technology platform with superior efficacy, safety and cost profile

- Delivers high-energy, acoustic pressure waves in the “shockwave” spectrum to activate biologic signaling at the cellular level and angiogenic responses, which restore normal healing processes and regeneration.
- Noninvasive, cost-effective and clinically efficient for clinicians and patients compared to alternative therapies.
- Multiple applications in wound care, orthopedics/spine, plastic surgery and cardiology.

Significant product development pipeline with large global markets in orthopedics and plastic/cosmetic

- orthoPACE® is proven to heal tendinopathies, non-union fractures with up to 6mm gaps, and to reduce synovitis in arthritic joints.
- Profile™ improves microcirculation, the lymphatic process and tissue remodeling. Investigations are ongoing to demonstrate its effectiveness on post-surgical scars, skin tightening and body contouring.

Accomplished executive leadership

- Management team has a strong legacy of commercial development and Class III PMA regulatory success.
- Significant clinical, regulatory, sales/marketing and medical policy/reimbursement expertise.

dermaPACE® addresses the multi-billion global wound care market

- Completed 206-patient, pivotal Phase III, Investigational Device Exemption (IDE) clinical trial to treat diabetic foot ulcers (DFU).
- dermaPACE® top-line DFU data showed compelling wound healing and safety results, with exceptionally low wound recurrence.
- Submitted PMA for FDA approval in 2Q:11.
- Chronic and complex wounds cost \$20 billion annually in the U.S., per AdvaMed.
- Rising prevalence of DFU linked to an aging population, obesity, vascular diseases, venous insufficiency, excessive pressure and diabetic neuropathy.
- 3 million DFU occur annually, are a recurrent condition, and lead to >82,000 amputations each year at a direct and indirect cost of \$20,000 to \$60,000 per patient.

Broad patent estate creates a barrier to entry

- 50+ issued and pending patents on PACE®.
- Claims cover particular electrode configurations, chemical components for shock wave generation, piezoelectric miniature fibers and detachable therapy heads with data storage.
- U.S. patents cover methods of use.

dermaPACE® PIVOTAL PHASE III DIABETIC FOOT ULCER STUDY DATA

48%

Wound Closure



Comparing wound area closure at 12 weeks, 48% of patients treated with dermaPACE® and 31% of Sham control patients experienced a ≥ 90% closure (p=0.0161).

99%

Median Closure



The median wound closure exceeded 99% for dermaPACE® treated patients achieving ≥ 90% wound closure at 12 weeks.

4.5%

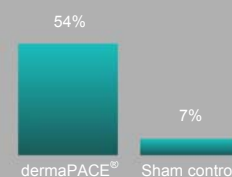
Recurrence

Of the patients treated with dermaPACE® that achieved wound closure at 12 weeks, only 4.5% had recurrence at 24 weeks.



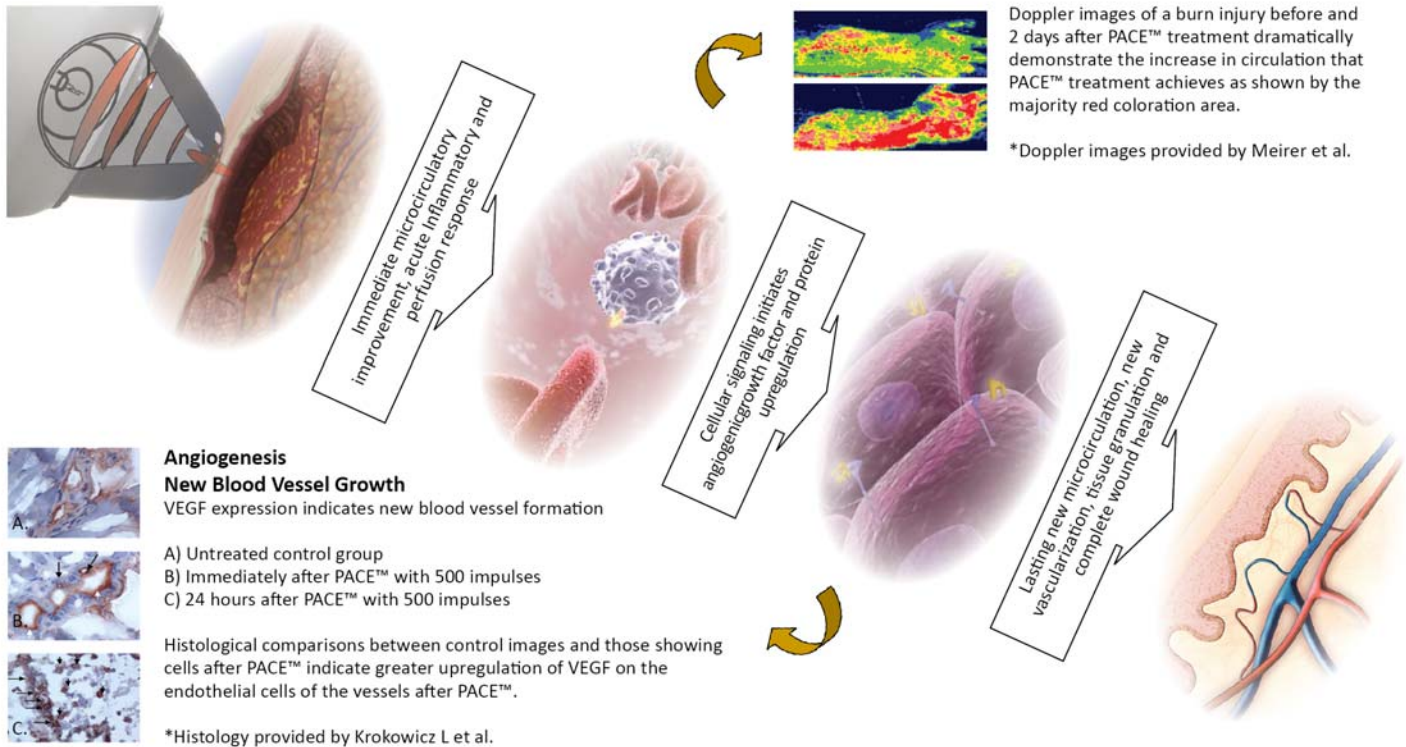
54%

Area Reduction

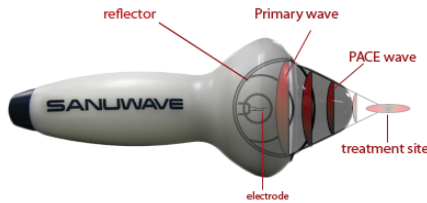


The average percent reduction in the size of the target ulcer in patients treated with dermaPACE® was 54%, compared to only 7% in the patients randomized to receive Sham control.

PACE[®] ELICITS A BIOLOGIC RESPONSE



PACE[®] PHYSICS AND SCIENCE



PACE[®] technology utilizes high-energy acoustic pressure waves in the “shock wave” spectrum to elicit biological effects that ultimately induce tissue regeneration and healing. An electrode generates a high-voltage spark in a fluid medium within the treatment applicator. This spark vaporizes a small amount of water to produce a shock wave. The shock wave reflects off the interior walls of an ellipsoid reflector and converges in a focal zone of energy that is applied to the treatment site.

PACE[®] pressure waves combine compressive and tensile stresses on cells and structures to promote an inflammatory response in musculoskeletal and soft tissue **resulting in revascularization and microcirculatory improvement**, including the production of angiogenic growth factors, enhanced new blood vessel formation or “angiogenesis,” **and the subsequent regeneration of tissue**. PACE[®] waves help re-initiate the inflammatory and proliferation phases of healing, and subsequently return a chronic condition to an acute one to help the body reinitiate its own healing response.

INVESTOR CONTACTS

Barry Jenkins, CFO
 SANUWAVE Health, Inc.
 (678) 578-0125
barry.jenkins@sanuwave.com

Anne Marie Fields
 Senior Vice President
 Lippert/Heilshorn & Associates, Inc.
 (212) 838-3777
afields@lhai.com

For More Information:
www.sanuwave.com



The information contained in this summary was obtained from the management of SANUWAVE Health, Inc. IT DOES NOT CONSTITUTE AN OFFER TO SELL, OR A SOLICITATION OF AN OFFER TO BUY, ANY SECURITIES OF THE COMPANY. Except for the historical information contained in this summary, the matters discussed herein are forward-looking statements, the accuracy of which is subject to risks and uncertainties. The Company undertakes no obligation to update or revise any forward-looking statements. For additional information about SANUWAVE Health, Inc. and its operations and related risks, please refer to the Company's most recent Form 10-K and Forms 10-Q, as amended to date.